

Wireless Ceiling Mount Sensor

Wireless Passive Infrared (PIR) and Photo Sensors

Date: _____

Quantity: _____

Company: _____

Project: _____



The Encelium Wireless PIR/Photo Sensors collect occupancy and daylight information from a lighted space and communicate collected data to the Encelium X Lighting Management System over a mesh network based on Zigbee® standards.

These wireless PIR/photo sensors have been recognized as some of the smallest in the industry. Powered by 2 AA batteries with an extended battery life of 10 years, these sensors are intended to be installed onto a ceiling surface or electrical box.

Three configurations are available: up to 450 sq ft (42 sq m) range, up to 1,500 sq ft (140 sq m) range, or a high-bay option that covers up to 2,800 sq ft (260 sq m) with a mounting height of up to 40 ft (12 m). These sensors feature tool-less mounting options for easy installation and offer masking options to maximize control flexibility.

Key Features & Benefits

- Available in three coverage options – 450 sq ft (42 sq m), 1,500 sq ft (140 sq m), and high-bay option
- Simple installation, using magnetic mounting and 360° directional flexibility
- Reposition sensor with no noticeable substrate marks
- Setup and configuration via Polaris™ software
- Wireless sensor offer 10-year battery life with automatic battery monitoring via Polaris software
- Works with:
 - Encelium X
 - Encelium Extend

Specifications

SENSING AND CONTROL

Light Sensor

- 0 – 1,000 Lux
- Shields included (no opening of sensor required)

Batteries

- 2-AA Alkaline batteries (provided)
- Exchangeable and readily accessible

Software

- Polaris™
- Any number of sensors can be mapped to any number of zones
- Timeout settings fully configurable

ELECTRICAL

Radio Frequency

- 2.4 GHz

ENVIRONMENTAL

Operating Temperature

- Standard Range (SR) and Extended Range (ER) Sensors
32° – 104°F (0° – 40°C)
- High Bay (HB) Sensor
32° – 140°F (0° – 60°C)

Relative Humidity

- 0% – 95% non-condensing, for indoor use only

PHYSICAL

Base Diameter

- 3.37 inch (85.5 mm)

Height

- 1.13 inch (28.6 mm) – SR Sensor
- 1.03 inch (26.2 mm) – ER and HB Sensors

Weight

- 3.9 oz (110 g)

Color

- Matte White

Housing

- UV stabilized plastic

Mounting Height

- 8 – 12 ft (2.4 – 3.7 m) – SR and ER Sensors
- Up to 40 ft (12 m) – HB Sensor
- Additional mounting accessory kit available

WARRANTY

- For warranty details, refer to the full warranty documentation at www.encelium.com

CERTIFICATIONS & SAFETY

Approbations

- cUL Listed (UL 916)
- FCC Part 15/ICES-003
- Meets ASHRAE Standard 90.1 and CEC Title 24 requirements



Ordering Information

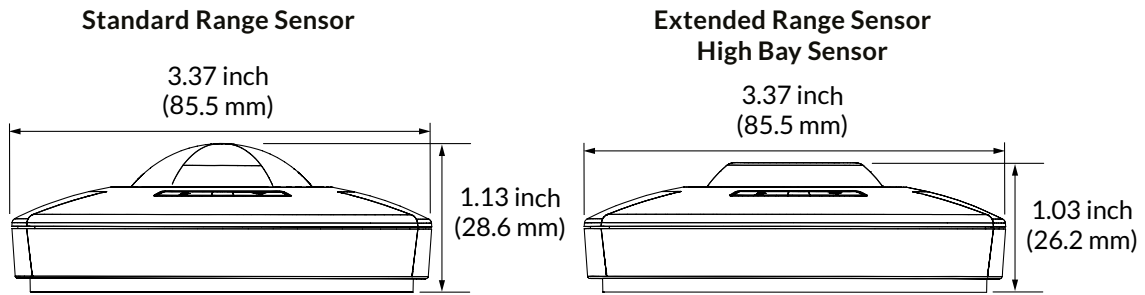
Item Number	Ordering Code	Description	Sensing Technologies	Coverage	Sensing Angle
45571	EN-SCPPH-0450-ZB	Wireless Ceiling Mount Sensor	PIR/Photo	450 ft ² (42 m ²)*	360°
45570	EN-SCPPH-1500-ZB	Wireless Ceiling Mount Sensor	PIR/Photo	1,500 ft ² (140 m ²)*	360°
56302	EN-SCPPH-HB-ZB	Wireless Ceiling Mount Sensor	PIR/Photo	See Notes**	360°
45584	EN-SCPPH-MK-ZB	Mounting Accessory Kit	–	–	–

* Mounting Height: 8 – 12 ft (2.4 – 3.7 m)

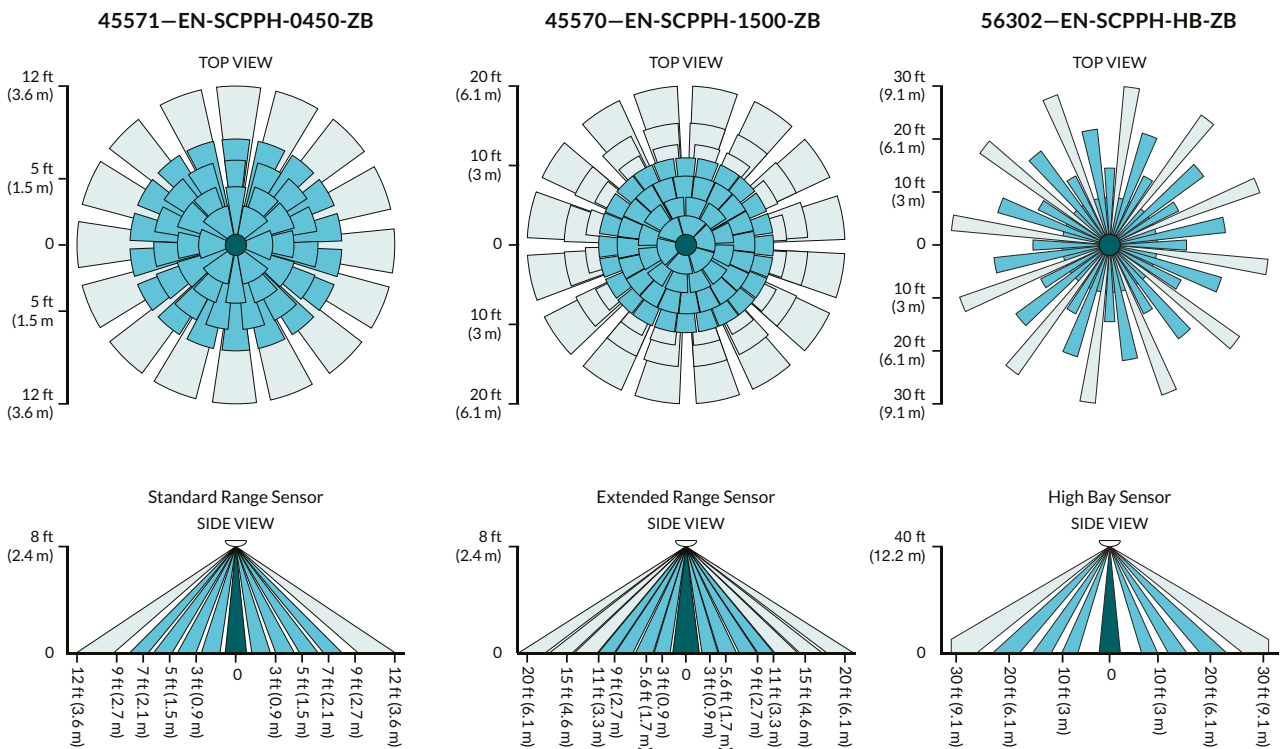
** Dependent on mounting height

Mounting Height	Coverage
20 ft (6 m)	~1,100 ft ² (102 m ²)
30 ft (9 m)	~1,800 ft ² (167 m ²)
40 ft (12 m)	~2,800 ft ² (260 m ²)

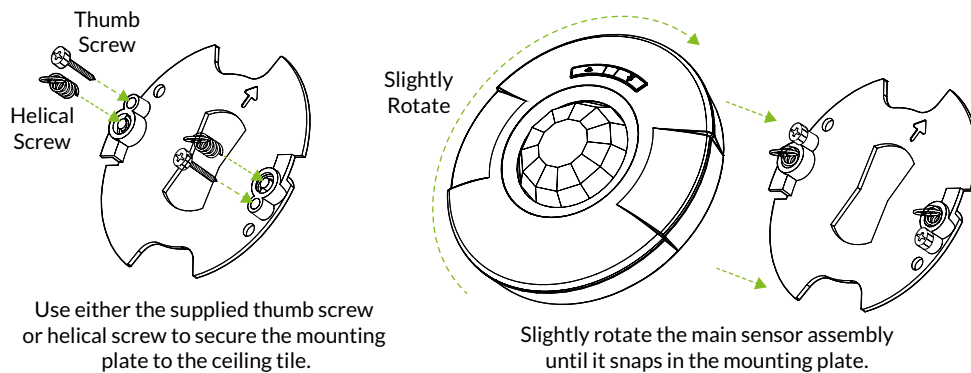
Dimensions



Field-of-View



Installation



Wireless System Overview

This illustration shows how each component is easily integrated into the Encelium X Networked Light Management System.

